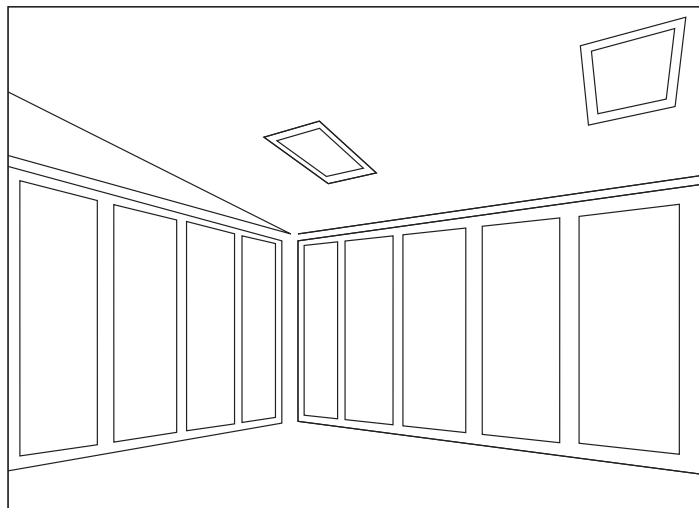
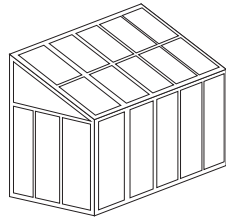




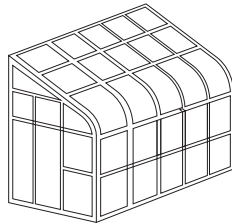
INSTALLATION GUIDE

# Skylight

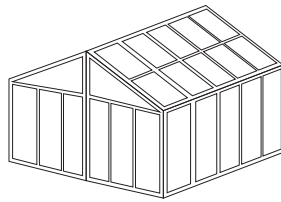




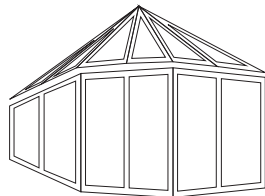
SolaraShade™  
**Straight**



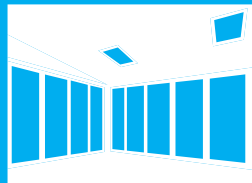
SolaraShade™  
**Curved**



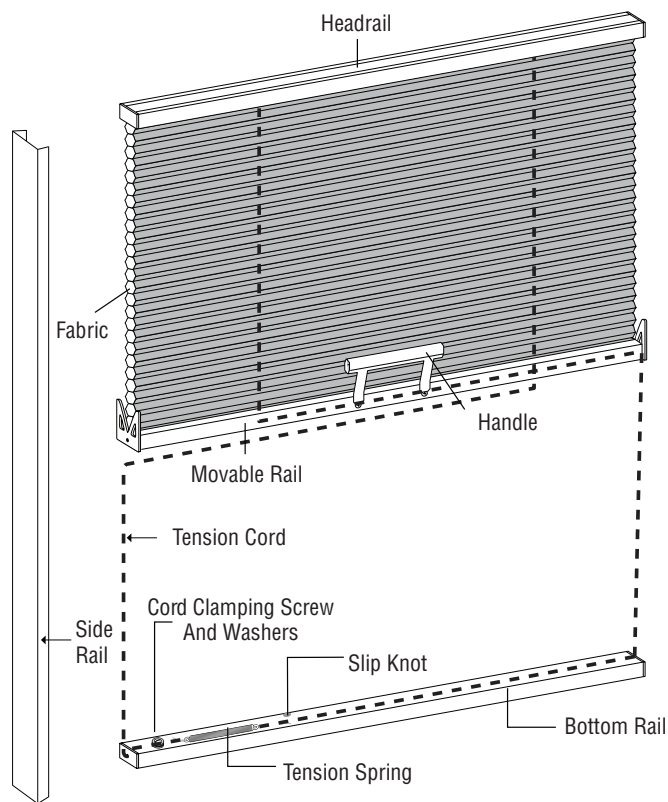
SolaraShade™  
**Cathedral**



SolaraShade™  
**Conservatory**  
Rectangle & Triangle



SolaraSky™  
**Skylight**



Expanded Hardware Diagram



# Skylight

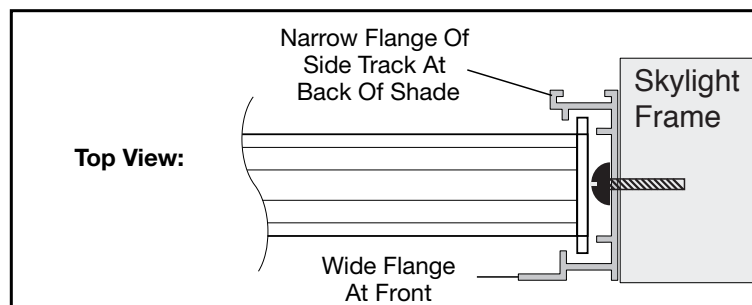
## INTRODUCTION

Thank You for purchasing SolaraSky by Brading Fabrication. Your new shade has been custom built for you from the highest quality materials. Once in your skylight, it will provide you with years of trouble-free use.

Installation has been designed to be as simple as possible. Please review the instructions to acquaint yourself with all of the procedures.

For assistance, call our Service Department at  
1-888-61-SHADE  
Visit our website at [www.solarashade.com](http://www.solarashade.com)

## MOUNT THE SIDE TRACK

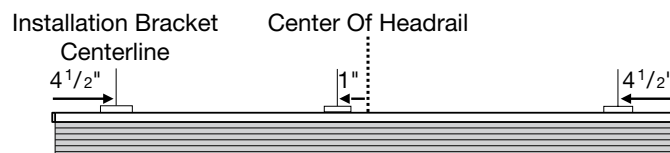


- Attach the side tracks to the inside of the skylight using pre-drilled holes.
- Make sure the wide flange is towards the room side of the skylight.
- Make sure the side tracks are parallel by measuring the distance between them at the top and bottom of the skylight.
- If the side tracks are more than  $\frac{1}{4}$ " off of parallel, use wooden shims under the mounting screw locations, starting at the ends of the side tracks.

## MOUNT THE INSTALLATION BRACKETS

### Bracket Placement

- Position installation brackets so their centerlines are  $4\frac{1}{2}$ " from the ends of the headrail.
- If your shade has a support cord, position a third bracket 1" to the left of the center of the headrail.

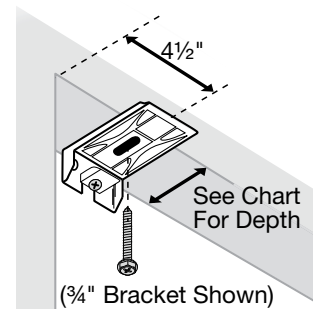


- Measure and mark all bracket centerlines.
- The depth required for a fully recessed mount depends upon the application.

**Depth Chart For Inside Mount Bracket Placement**

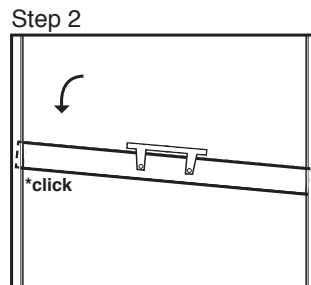
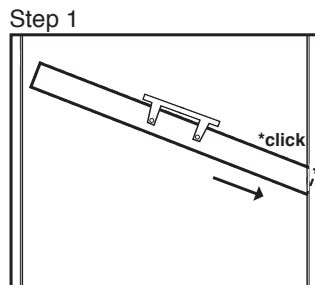
Fabric Pleat Size	Minimum Depth	Flush Mount
3/8"	7/8"	1 11/16"
3/4"	1 1/8"	2 1/2"

- Use one mounting screw to attach each installation bracket to the top jamb of the skylight opening.
- Place the screws on the marked centerlines and align the brackets so their front edges are equal.

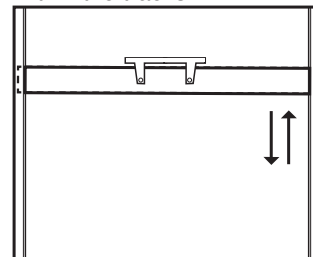


**INSTALL SHADE INTO SIDE TRACKS**

- Position shade on a slight diagonal inside the skylight track opening.
- Be careful not to tangle the tension cord.
- Push one movable rail guide (grey plastic M shape) into the track. (Step 1)
- Bring to a horizontal position and push the second movable rail guide into the opposite track. (Step 2)

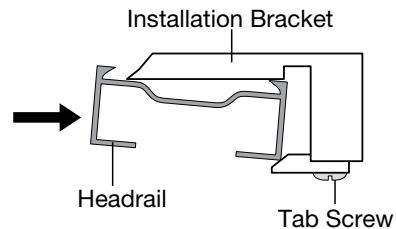


Shade should move freely within the tracks



## INSTALL THE HEADRAIL

- With the front (colored) side of the fabric facing you, slide the headrail into the installation brackets.
- Fit the front lips of the brackets into the front groove on the top of the headrail.
- Snap the headrail into place.
- Tighten the tab screw on each bracket until it is snug. Do not overtighten the tab screw.



**CAUTION:** Make sure the fabric is not trapped between the headrail and the installation bracket tabs.

## INSTALL THE ANCHOR RAIL

**CAUTION:** Be careful not to tangle the cords.

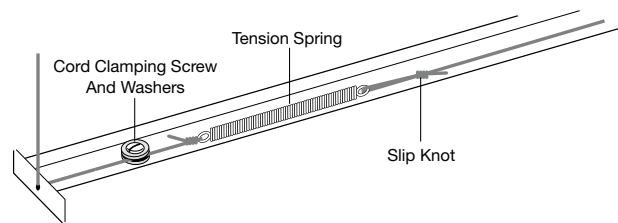
- Lower the anchor rail to the bottom of the side tracks.
- Make sure the open side of the anchor rail faces up, with the spring and cords exposed.
- If the open side is covered by a fabric strip, remove it to make any shade adjustments.
- Attach the anchor rail directly to the sill.
- Center the rail within the side tracks before mounting.

## ADJUST THE SHADE

### Tension Cords

The moving rail should slide easily, yet hold its position when it is released. Adjust the tension cords in the anchor rail if the moving rail does not slide properly.

- Move the slip knot to the right to increase the cord tension. Do not stretch the spring to a length greater than 5½".
- Move the slip knot to the left to decrease the cord tension.



### Moving Rail

The moving rail should be parallel to the anchor rail so that the two rails make even contact when the shade is closed. Adjust the moving rail if it is not parallel.

- Loosen the cord clamping screw.
- Slide the cord between the two washers.

---

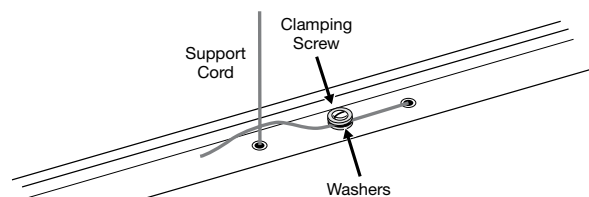
**CAUTION:** Do not adjust the cord tension while you make this adjustment.

---

### Support Cord Tension (If Applicable)

If your shade has a support cord, it should be very taut. To adjust:

- Loosen the support cord clamping screw.
- Pull the cord through the two washers to the desired tension.
- Tighten the screw.
- Make sure the cord is held taut between the two washers.

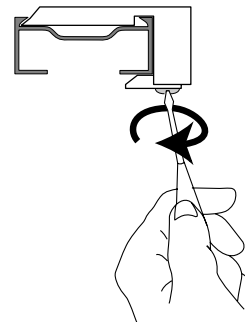


**FINAL ASSEMBLY**

- Fit the fabric strip into the anchor rail to cover the internal hardware.
- Attach the handle to the moving rail using the screws provided.

**REMOVE THE SHADE**

- Fully raise the shade.
- Unscrew the tab screw on each bracket to release the headrail.
- If you used brackets to install the anchor rail, unscrew the tab screw on each bracket to release the anchor rail.
- If you did not use brackets to install the anchor rail, remove the fabric strip, then remove the screws to release the anchor rail.



**TROUBLESHOOTING**

Problem	Solution
The shade does not raise and lower evenly.	<ul style="list-style-type: none"> <li>■ Check the installation brackets. Make sure the shade fabric is not caught between the bracket tab and the headrail.</li> <li>■ Adjust the cord tension (see <i>Moving Rail</i>, page 10).</li> <li>■ Check that the lift cords are not pinched or tangled.</li> </ul>
The shade will not snap into the mounting brackets.	<ul style="list-style-type: none"> <li>■ Make sure the mounting brackets are level. Loosen the tab screws slightly.</li> </ul>

## CARE AND CLEANING

Honeycomb shades are made of an anti-static, dust-resistant fabric which repels dirt and dust. For most honeycomb fabrics, the following options are available if your shade needs cleaning.

### Dusting

Regular light dusting with a feather duster is all the cleaning that is needed in most circumstances.

### Vacuuming

Use a hand-held vacuum with low suction for more thorough dust removal.

---

---

### Spot-Cleaning

- Prepare a solution of warm water and a mild detergent.
  - Dampen a clean cloth in the solution and wring it out.
  - Dab the spot with the dampened cloth until it is gone. **Do not rub the fabric.**
  - Allow the shade to dry in the completely lowered position.
- 
- 

### Deep Cleaning

- Immerse the shade in a basin or bathtub filled with a mild detergent. Never immerse the headrail into the solution.
  - Rinse with clean water.
  - Fully raise the shade and tilt to eliminate excess water.
  - Reinstall the damp shade, lower it, and let it dry completely.
- 

### Ultrasonic Cleaning

Some honeycomb fabrics can be ultrasonically cleaned by a professional.

- Specify that a mild detergent solution be used.
- Never immerse the headrail into the solution.
- Dry the shade completely in the lowered position.

[www.solarasky.com](http://www.solarasky.com)



3206 Yonge Street, Toronto, Ontario M4N 2L2 Tel: 416-488-6600 1-866-BRADING (272-3464) [www.bradingfabrication.com](http://www.bradingfabrication.com)